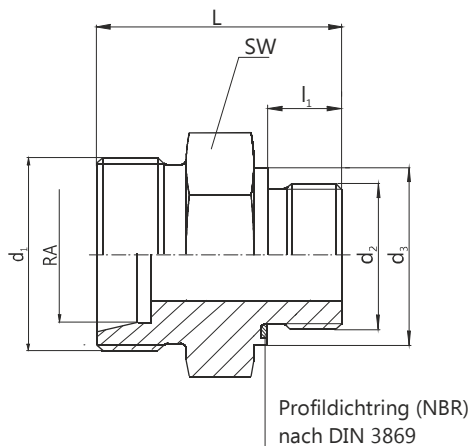


## RV DN CEL EZE

**CEL**  
Gewindezapfen  
nach DIN 3853  
Bohrungsform W (24°)  
nach DIN 3861



**EZE**  
Einschraubzapfen BSP  
Form E nach DIN 3852/11

Werkstoff: Automatenstahl  
Oberflächenschutz: DIN 50979 - Fe/Zn 8/Cu/T2

DN	Reihe	CEL		EZE			L mm	SW	PN bar	Bezeichnung
		RA	d <sub>1</sub>	d <sub>2</sub>	d <sub>3</sub> mm	l <sub>1</sub> mm				
6:10	L	8	M 14 x 1,5	G 1/2	27	14	54,0	27	315	RV 6:16 CEL EZE
8:10		10	M 16 x 1,5	G 3/8	22	12	57,0	22		RV 8:10 CEL EZE
8:16		10	M 16 x 1,5	G 1/2	27	14	55,0	27		RV 8:16 CEL EZE
10		12	M 18 x 1,5	G 3/8	22	12	57	22		RV 10 CEL EZE
10:16		12	M 18 x 1,5	G 1/2	27	14	42,0	27		RV 10:16 CEL EZE
10:16		12	M 18 x 1,5	G 1/2	27	14	43,0	27		RV 10:16 CEL EZE
10:16		12	M 18 x 1,5	G 1/2	27	14	55,0	27		RV 10:16 CEL EZE
12:10		15	M 22 x 1,5	G 3/8	22	12	32,5	24		RV 12:10 CEL EZE
12:16		15	M 22 x 1,5	G 1/2	27	14	43,0	27		RV 12:16 CEL EZE
12:16		15	M 22 x 1,5	G 1/2	27	14	66,0	27		RV 12:16 CEL EZE
16:10		18	M 26 x 1,5	G 3/8	22	12	33,5	27		RV 16:10 CEL EZE
19	S	25	M 36 x 2	G 3/4	32	16	80	36	400	RV 19 CEL EZE-L80
19		25	M 36 x 2	G 3/4	32	16	100	36		RV 19 CEL EZE-L100